



Set in the prestigious hillside suburb of Konia, Konia Park 2 comprises 16 detached villas with beautiful countryside views. All villas enjoy a high-quality finish internally and externally. The architect has used clean modern lines with natural materials and open spaces to achieve a perfect balance of design and practicality.

A GREAT LOCATION



5 mins



5mins



12 mins



3 mins



12 mins



6 mins



15 mins



Pafos 12 mins



Larnaca 80 mins



Troodos 73 mins



40 mins



95mins



PLACES OF INTEREST

1. Pafos Castle
2. Kato Pafos Archeological Park
3. Paphos Mosaics
4. Tomb of the Kings
5. Town Centre km



Private Schools

International School 5.5 km

Aspire School 6 km



Supermarkets



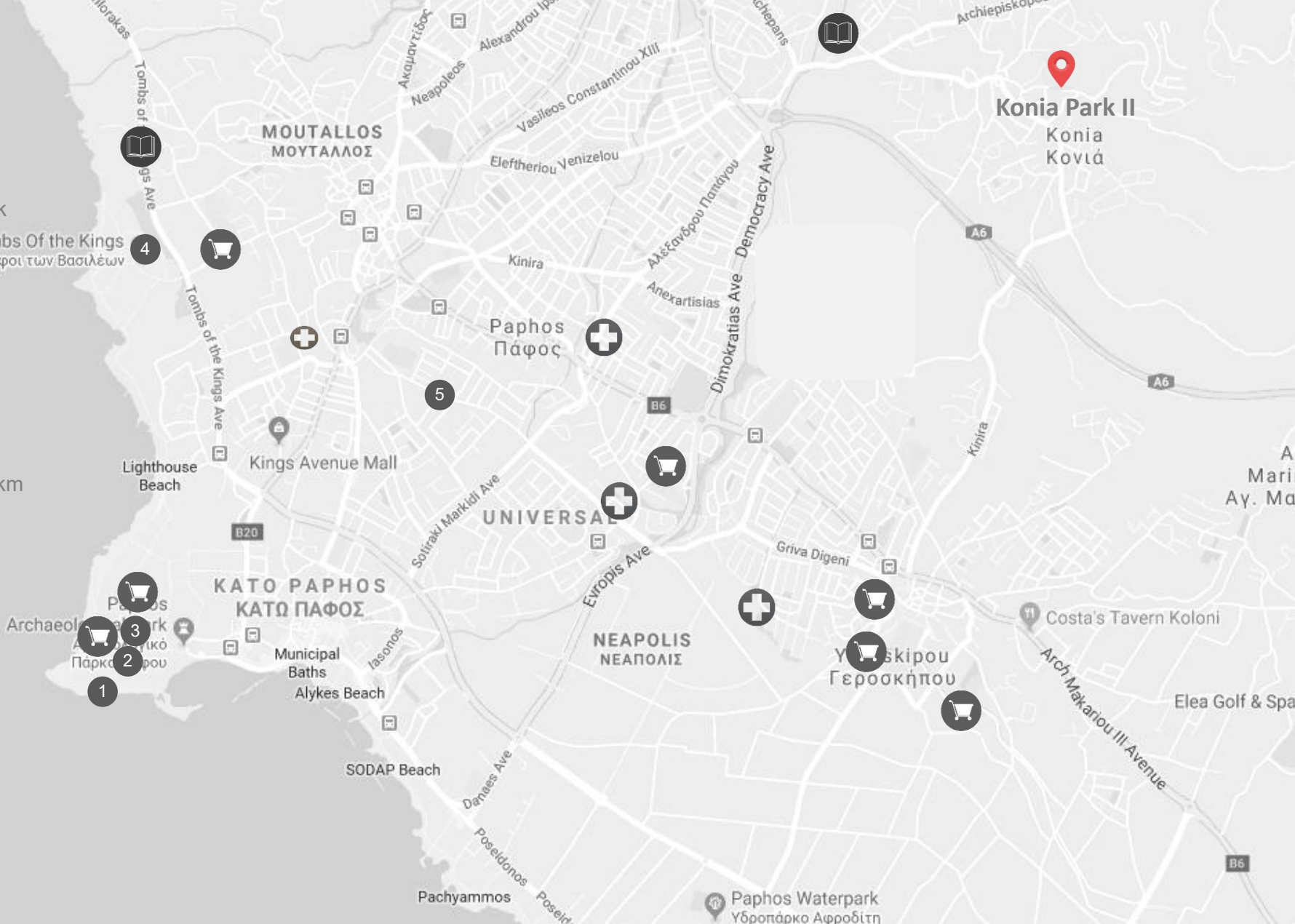
Hospitals



Paphos Airport 13.9 km



Larnaca Airport 128.5 km





KONIA PARK II
Villas



Site Plan



VILLA No.13

Bedrooms 3

Covered areas (m²)

Covered area 127.33

Covered verandas 10.92

Total covered area 138.25

Uncovered verandas 10.92

Plot 306.00

Bathrooms

2

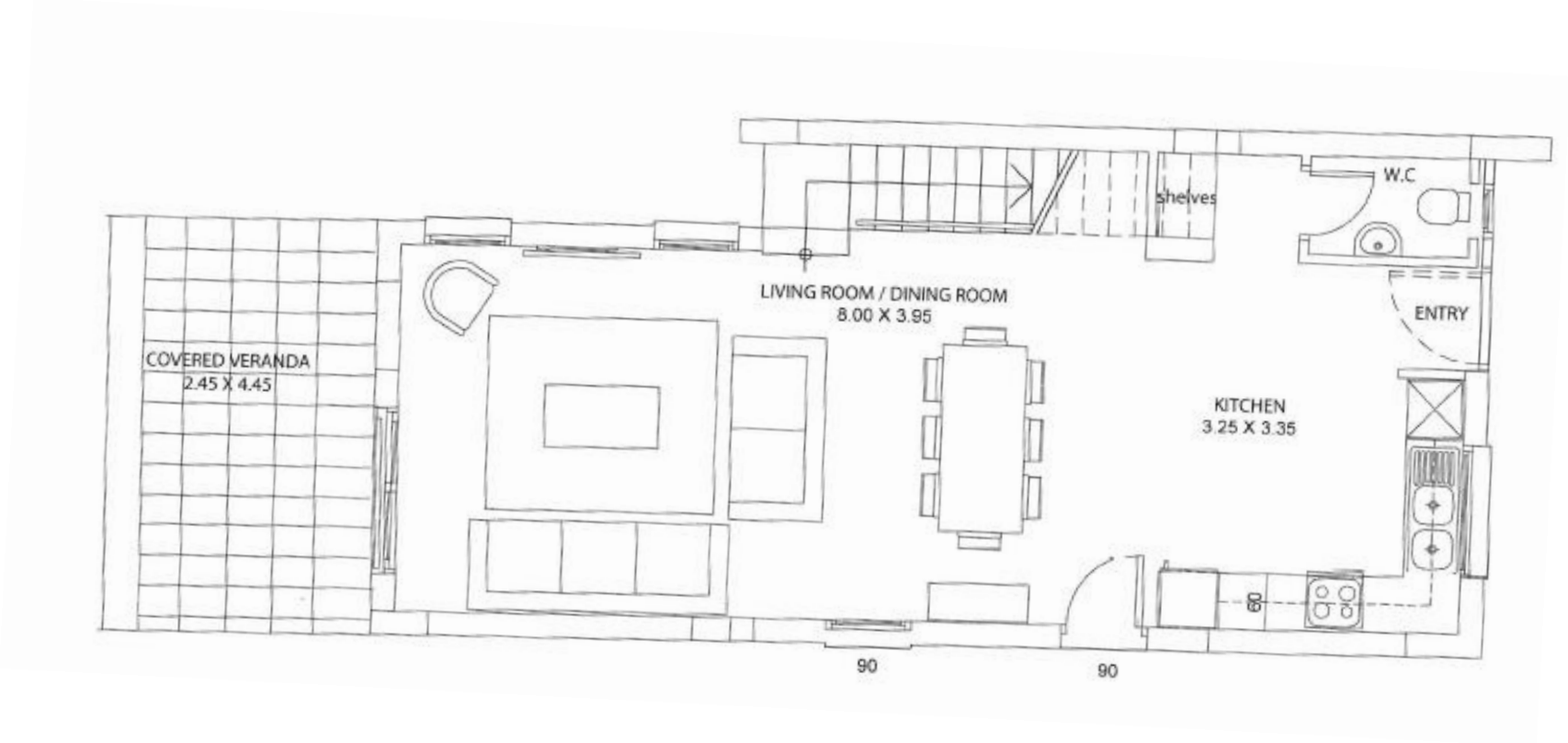
En-suite 1

Family bathroom 1

Garden Yes

Price: €480,000 plus VAT

FLOOR PLANS – VILLA No. 13



Ground Floor



First Floor















The below pages are sample with furniture





